

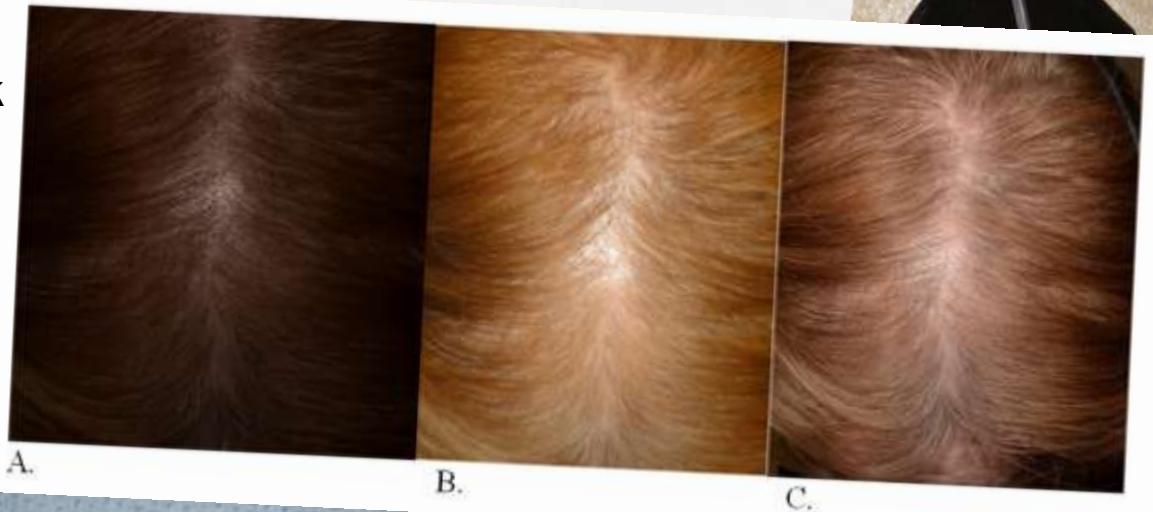
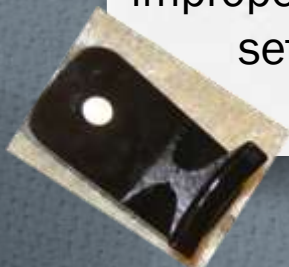


Stereotactic System “Trichology Photo Imaging”

Suitable for taking “Global Photograph” pictures and presents an assembly, which combines a device, fixing patient’s head in same set position, a camera with a specifically configured flashes and a special panel or a ruler, to determine the distance between camera and patient.



The main purpose of a Stereotactic System is to insure a recreation of an **identical reproducible conditions for a survey of the specific study area**. When using a Stereotactic System in clinical practice, the specialist will be **guaranteed to receive a high-quality “Global Photograph” images** and to avoid any errors in evaluation of the patient’s condition due to improperly matched picture shooting parameters and related problems, including a lack of sharpness, excessive glare, “illumination”, improperly exposed ISO settings, etc.

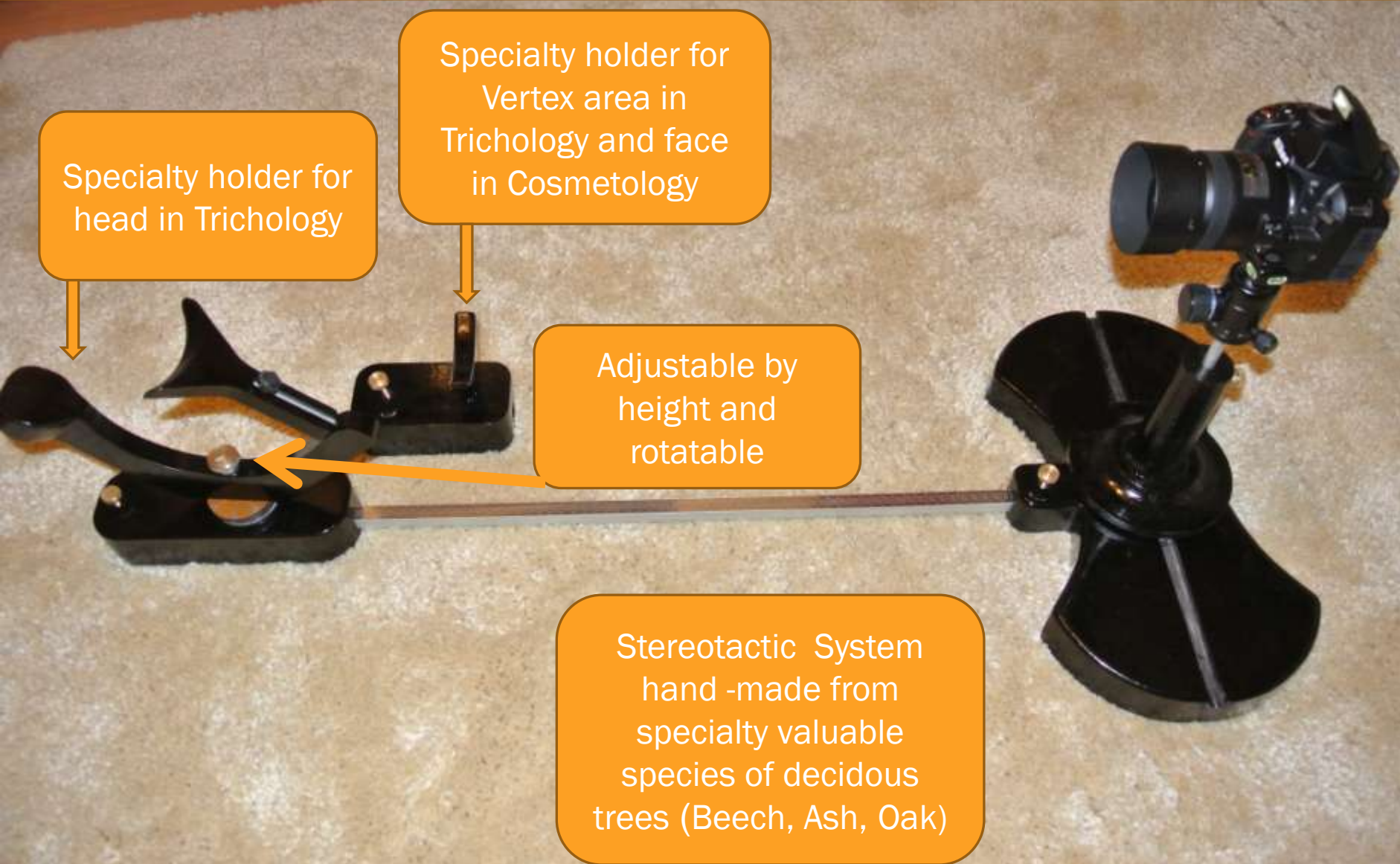


A.

B.

C.

General view of “Trichology Photo Imaging” Stereotactic System. Adjustable distance between camera and specialty holders is from 0 to 60 cm.







Adjustable camera holder moves sideways. The tilt angle of the camera can be adjusted vertically, horizontally, diagonally. There are levels for nomination of the horizon.



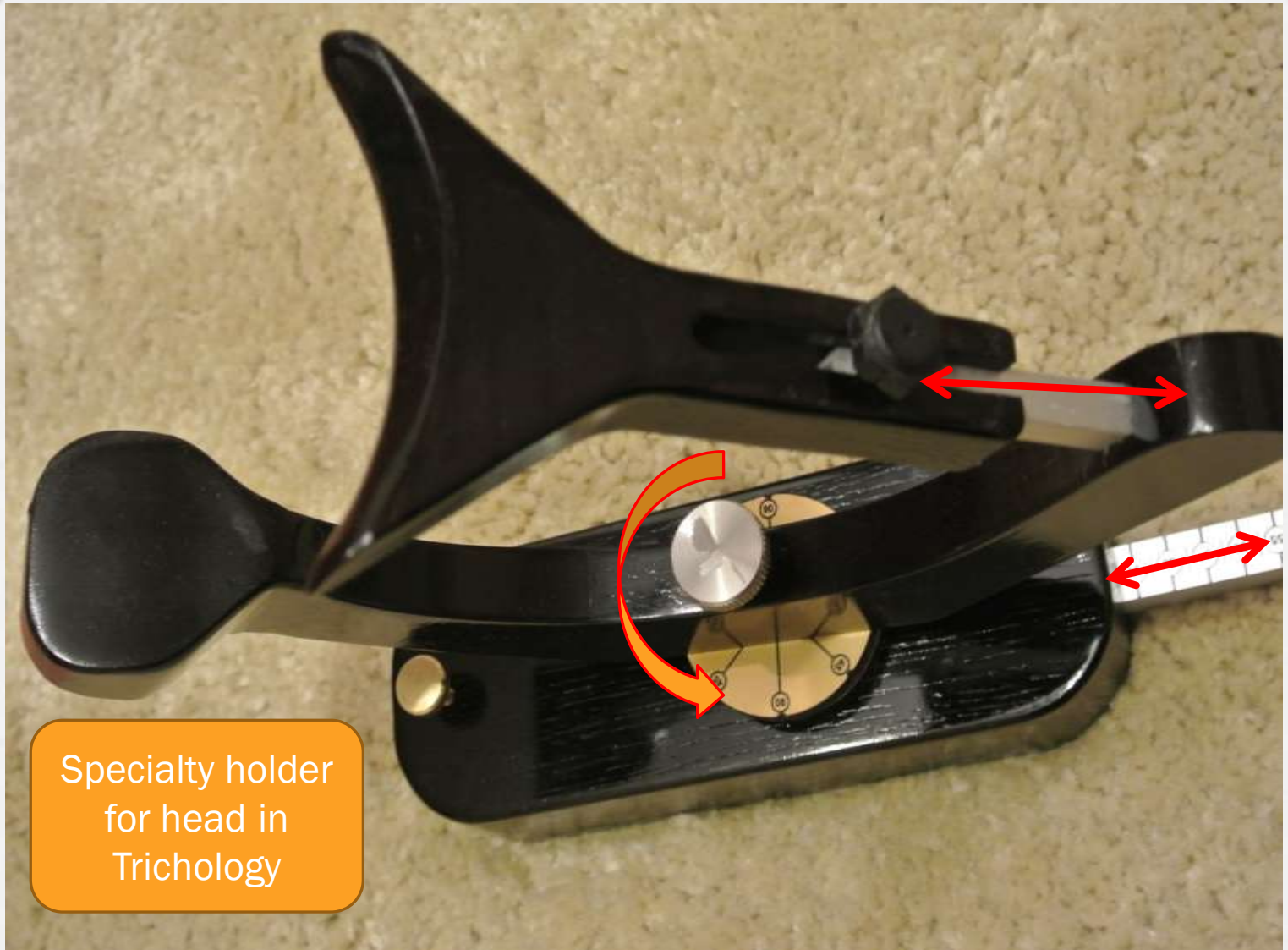
Base of the adjustable camera holder



Specialty holder for Vertex area in Trichology and face in Cosmetology

Specialty holder for head in Trichology

Distance measurer from camera to specialty holders



Specialty holder
for head in
Trichology

Global photographs of central partition



Global
Photograph
of central
partition



Global
Photograph
of Vertex
area



Global
Photograph
of Vertex
area



Global
Photograph
of Frontal-
Parietal area

Parameter influence to Global Photograph picture quality



A.

B.

C.

Photographing a patient using various parameters: A - lack of lighting; B - "flare", glare, poor sharpness; C - shooting settings chosen adequately